



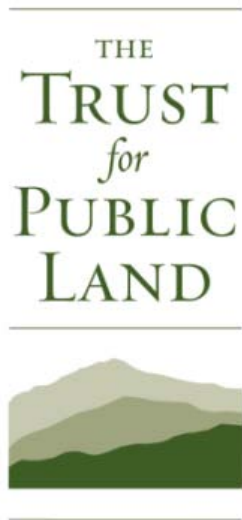
Upper Wenatchee Community Lands Plan

Steering Committee Kick-off Meeting

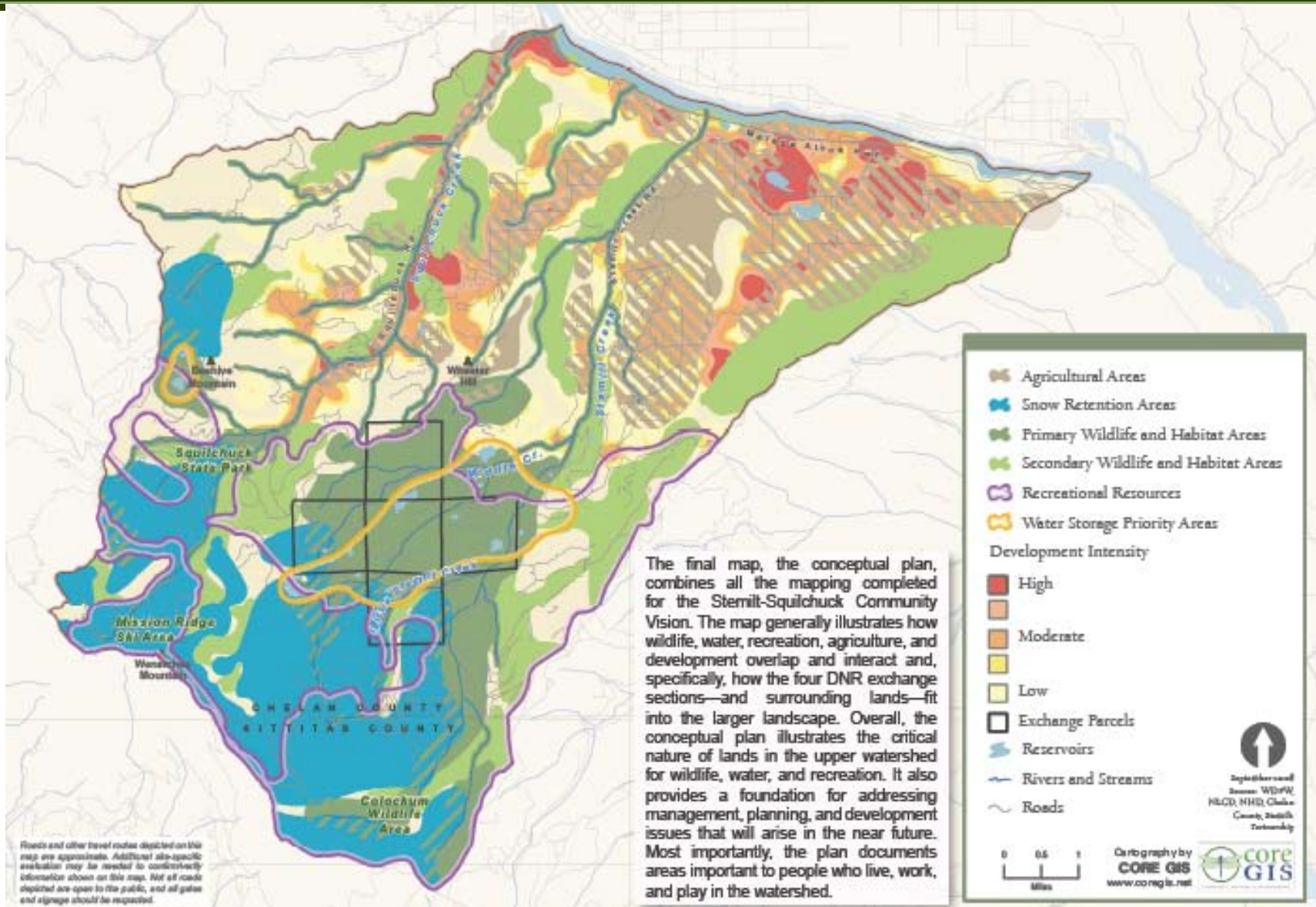
January 14, 2014



Project Conveners



Stemilt-Squilchuck Conceptual Plan





Why a Community Lands Plan?

- Land ownership and management impact communities' economies and quality of life
- Natural resources are at the center of our area's desirability as a place to live, work and recreate
- Area has a complex ownership pattern
- Large tracts of forest may be sold
- Being proactive allows us to shape our future



Upper Wenatchee Community Lands Plan

Scope – Cashmere to Stevens Pass
Three sub-areas

- Blewett Pass/Peshastin
- Chumstick Valley
- Nason Creek/Coulter



**Community Outreach
and Current
Conditions Analysis**

**Identify
Community
Values +
Goals**

**Map
Priorities
for each
Goal**

**Determine
Realistic Steps for
Implementation**



A community conversation to identify priorities.



Role of the Steering Committee

- Leadership
- Stakeholder input/representation
- Knowledge of issues and opportunities
- Spreading the word
- Building momentum
- Screening information
- Advising at each step of the plan



Project Timeline and Steps

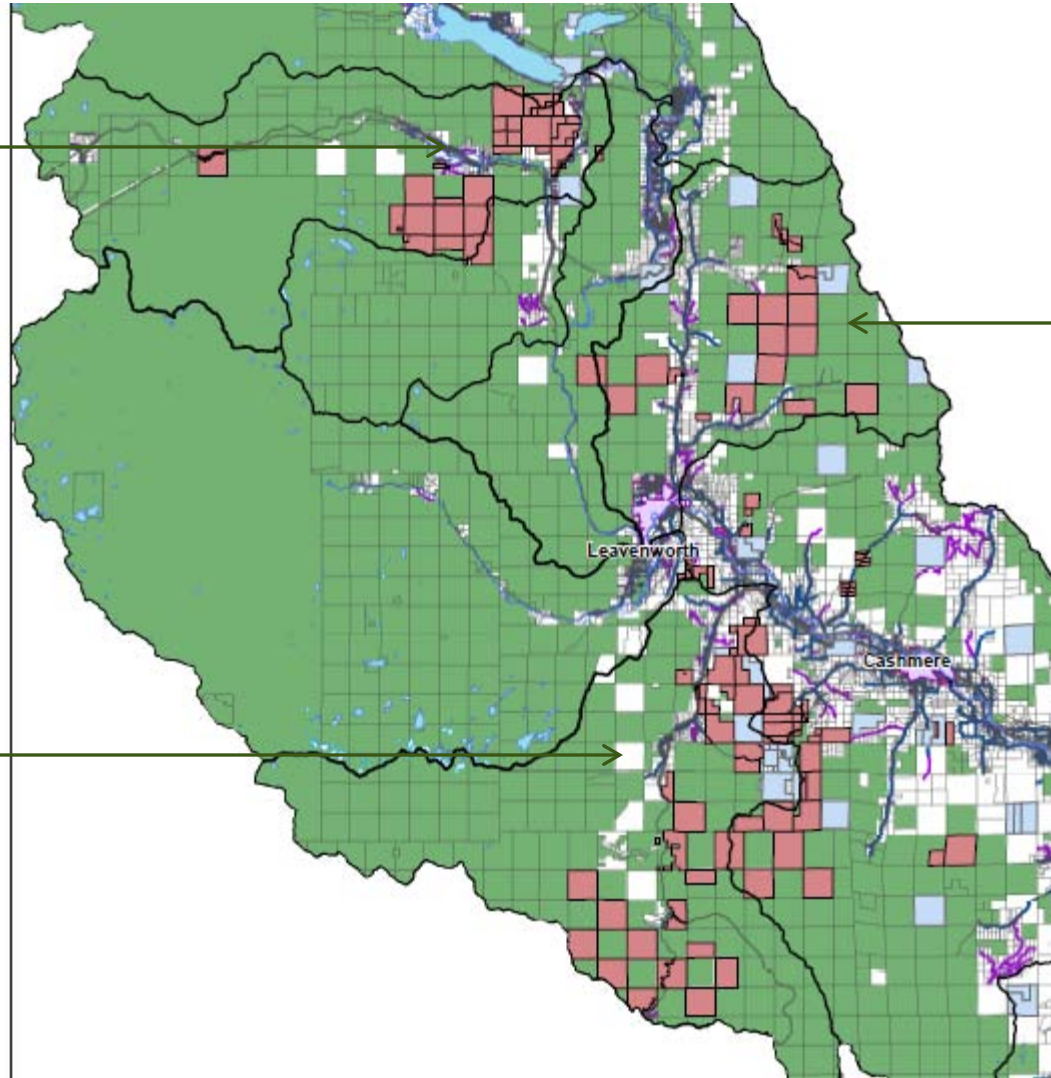
- 16 months
- Includes 4 steering committee meetings
- Steering committee reviews initial GIS model, helps develop action plan and reviews draft report/plan
- Community meetings in all 3 sub areas
- Survey both online and in print
- Conveners will participate in other community events



***Nason
Sub-
Area***

***Chumstick
Sub-Area***

***Peshastin/
Blewett Sub-
Area***





Project Objectives – a starting point

Purpose – Create a community-based vision for the Upper Wenatchee River Basin and implementation plan

- Engage the community in a process to identify values connected to the local landscape
- Develop a GIS model that identifies priority areas that embody public values
- Map the priorities and make a plan for voluntary land conservation and management
- Attract public and private dollars to implement the vision





Example – I value:



- My Criteria:**
- **Cold, flowing water**
 - **Year round supply**
 - **Habitat for sport fish**
 - **Healthy fish populations**
 - **Public access**



Small Group Questions

- What would you like the Upper Wenatchee Community Lands Plan process to accomplish? What do you think the objectives should be?
- The landscape that is most important to me and my community is _____ because _____.



Technical Advisory Team and Current Conditions

- *Water Resources*
- *Wildlife Resources*
- *Working Lands*
- *Recreation and Tourism*
- *Fire prevention*



Data Providers



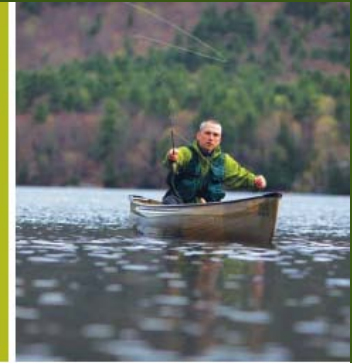
Community Outreach

- Public meeting in each sub-area (Late February?)
- Existing local meetings and gatherings (Ideas?)
- Survey, both online and print version
- Information in various local media outlets
- Through interested organizations and partner agencies
- Possible County website page

Reports and Products



Land conservation will help the Lake Region retain critical attributes of local character and support economic growth. For example, developing accessible recreational and scenic viewing locations encourages recreation and tourism. Conserving our forest and agricultural lands promotes the continuity of rural landscapes and supports local employment. Preserving our region's wildlife habitat ensures that hunting, fishing, and nature observation can continue to flourish. The conservation of these natural resources, in turn, will attract new residents and businesses, broaden the employment base, and diversify our economy.



ACTION PLAN

In the spring of 2011 local leaders created a focused action plan to implement the Greenprint. The plan proposes concrete steps with willing landowners and other partners to conserve the key water sources, recreational opportunities, plant and animal habitats, character of village centers, scenic vistas, and farms and forests that make up the Lake Region's quality of place. It also explores potential funding options that can be knit together into a "funding quilt"—a combination of local, state, federal, and private funding sources to help achieve open space and conservation objectives and amplify associated economic development opportunities.

The Lake Region Community Greenprint action plan promotes an acceleration of both the pace and the quality of land conservation in the Lake Region, asking residents and partners to:

- Strengthen participation and partnerships to implement the Greenprint
- Promote conservation of natural resources and recreation to support the economy and tourism
- Use the Greenprint goal maps to further land conservation with interested landowners
- Provide resources to assist municipalities and inform land use decisions to protect quality of life and small-town character
- Discuss and determine appropriate methods for financing open space protection projects in mapped priority areas

For more information about this project and access to all Greenprint maps, please visit: tpl.org/maine.

THE LAKE REGION GREENPRINT A COMMUNITY PARTNERSHIP

A Project of the Maine Community Scape Initiative



West Galveston Island Greenprint Overall Resource P

3/272007

Gaveston Island, TX

Total Study Area = 15,754 acres*; All Developed Land = 3,303 acres**; All Protected

Goal	Goal Weight	Priority Acres****	Protected Priority Acres
Overall Conservation	Composite	6,835	1,717 (25%)
Protect Habitat	28%	11,610	2,244 (19%)
Protect Shoreline	27%	453	116 (26%)
Preserve Island's Local Character	18%	8,182	2,045 (25%)
Provide Drainage and Flood Management	16%	1,536	215 (14%)
Provide Access and Connectivity for Public Recreation	11%	2,844	382 (13%)

* The Study Area includes all parcels west of the airport, and excludes roads.

** Developed Lands based on Galveston Island parcel data

*** Protected Land includes all parkland

**** Priority Acres are high priority land with a score of "3" or greater on a scale of 0-5 for the listed goal.



Steering Committee

- *Team Members:* Individuals who represent important interests within the county including agriculture, business, recreation, wildlife, and government.
- *Purpose & Responsibilities:* Provide essential guidance and feedback, including:
 - identifying open space priorities,
 - assisting with the planning of public workshops,
 - providing guidance and direction to the Technical Advisory Team and Project Team, and
 - helping to communicate project goals and objectives to other interested parties.
- *Time Commitment:* 3-4 meetings over one year.



Technical Advisory Team

- *Team Members:* 6 – 7 local experts in subjects such as wildlife habitat, hydrology, working lands, recreational and cultural assets, land use planning, and Geographic Information Systems data.
- *Purpose & Responsibilities:*
 - Evaluate the analysis and methodologies defined for each conservation goal,
 - Recommend best available data sources for GIS analysis, and
 - Help insure that defensible science is used for mapping the conservation goals.
- *Time Commitment:* 3-4 meetings over the duration of the project. Most will be conducted on conference call.